

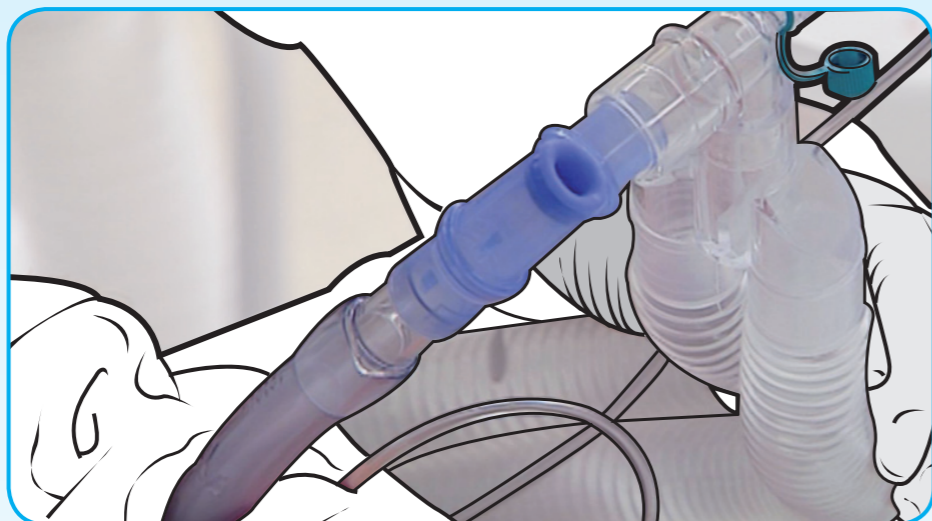
FIBROPTIC GUIDED TRACHEAL INTUBATION THROUGH SUPRAGLOTTIC AIRWAY DEVICE (SAD) USING AINTREE INTUBATION CATHETER

Please ensure the SAD is in place; give 100% oxygen; confirm adequate sedation/anaesthesia, ventilation & paralysis

Aintree catheter

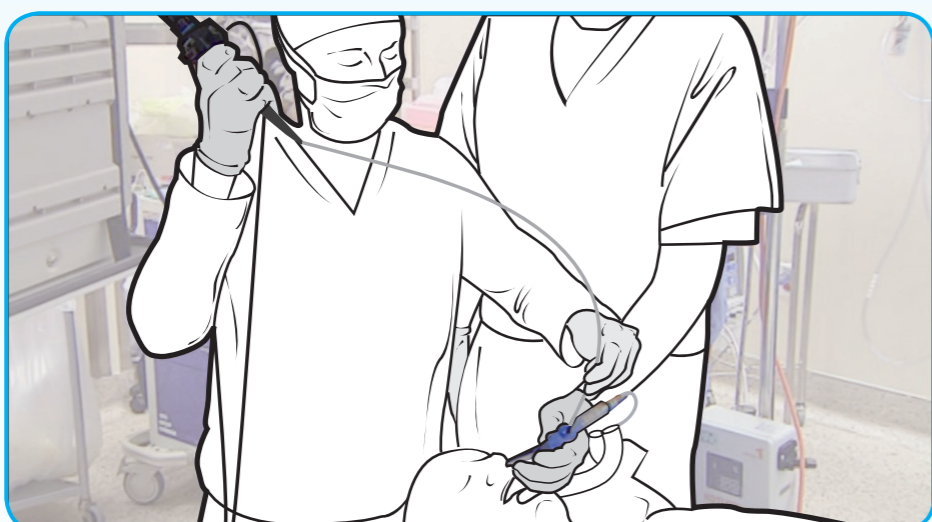
- ❖ 56cm long hollow catheter
- ❖ 6.5mm outer diameter; 4.7mm inner diameter
- ❖ Easily preloaded onto an appropriately sized intubating fibroscope (maximum insertion cord diameter - 4.2mm)
- ❖ Flexible enough for loading over fibroscope
- ❖ Stiff enough to facilitate railroading of tracheal tube
- ❖ Comes with 2 rapifit adaptors (please refer to manufacturer's guidelines)
- ❖ Used for SAD assisted orotracheal fiberoptic intubation

1



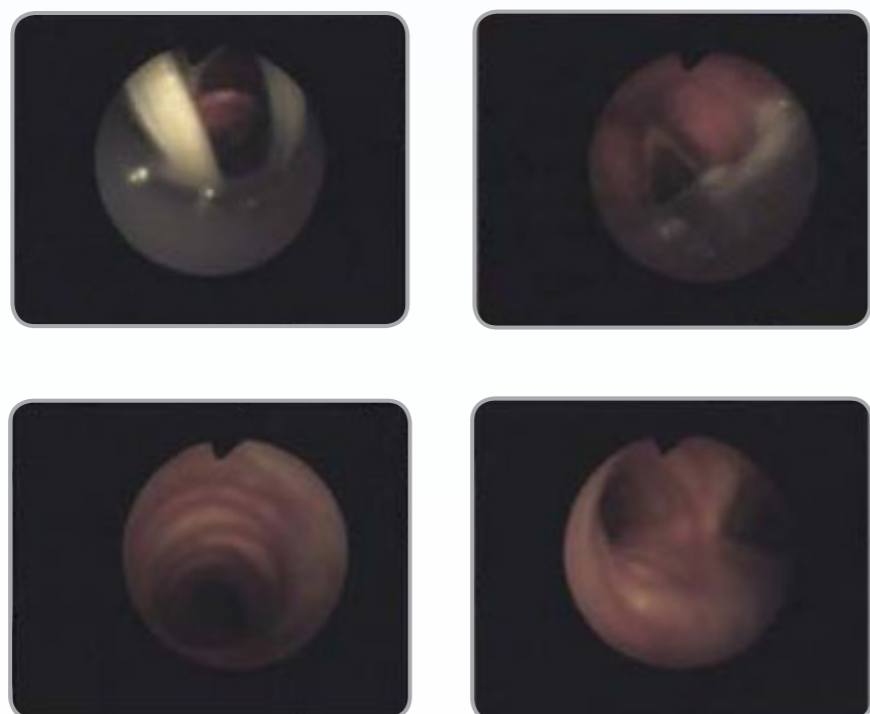
Having prepared the fibroscope (FS) and camera system, lubricate the outer surfaces of both the Aintree Intubation Catheter (AIC) and FS. Preload AIC onto FS and secure with tape. Attach a 15mm bronchoscopic swivel connector (with port) to SAD and attach the anaesthetic circuit to the swivel connector. Confirm adequate anaesthesia, muscle relaxation and assisted ventilation.

2



The SAD should be immobilised by an assistant. Introduce FS with loaded AIC through top port of swivel connector into the SAD lumen.

3

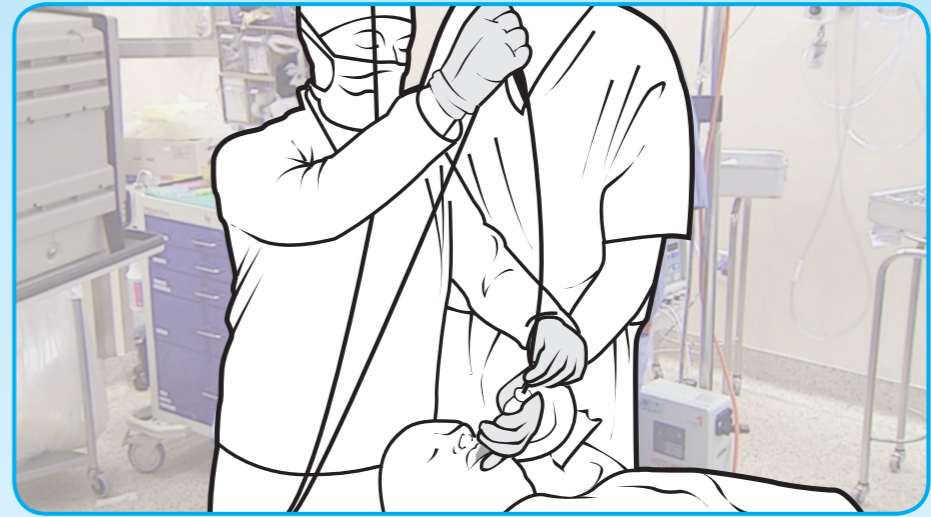


Sequentially visualise SAD aperture bars (if present), glottis, tracheal rings and finally carina as the FS passes caudally. **Never advance beyond carina.**

Permission for use granted by Cook Medical Incorporated, Bloomington, Indiana.
 Authors: Dr. Rajmohan Padmanabhan, Consultant Anaesthetist, NHS Lanarkshire
 Dr. Barry McGuire, Consultant Anaesthetist, NHS Tayside
 Illustrations produced by Andy Morris, Medical Illustration Department, NHS Lanarkshire. 26/01/2011

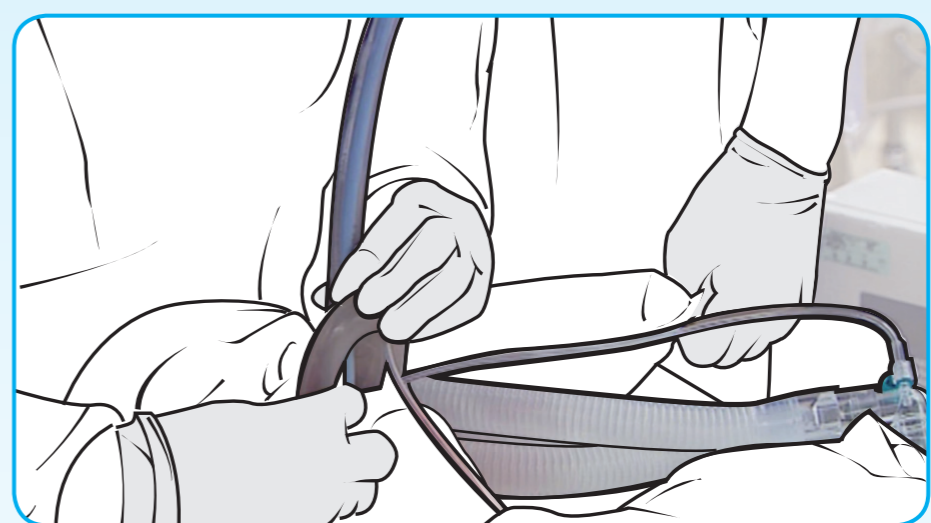
The AIC was invented in Liverpool, UK;
 Reference: Anaesthesia, 1996, volume 51, pages 1123-1126.

4



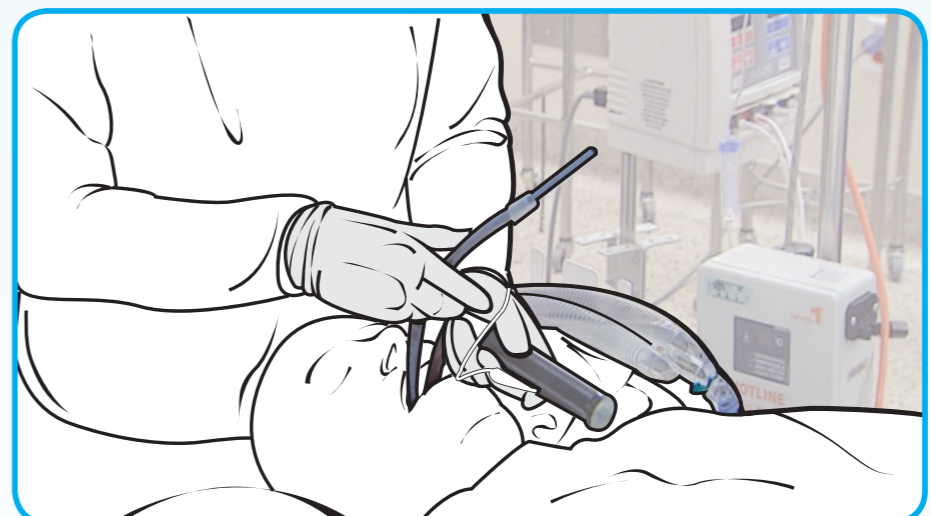
Note depth of AIC. With assistant immobilising SAD and the operator maintaining the position of AIC, the FS alone is withdrawn after removal of securing tape.

5



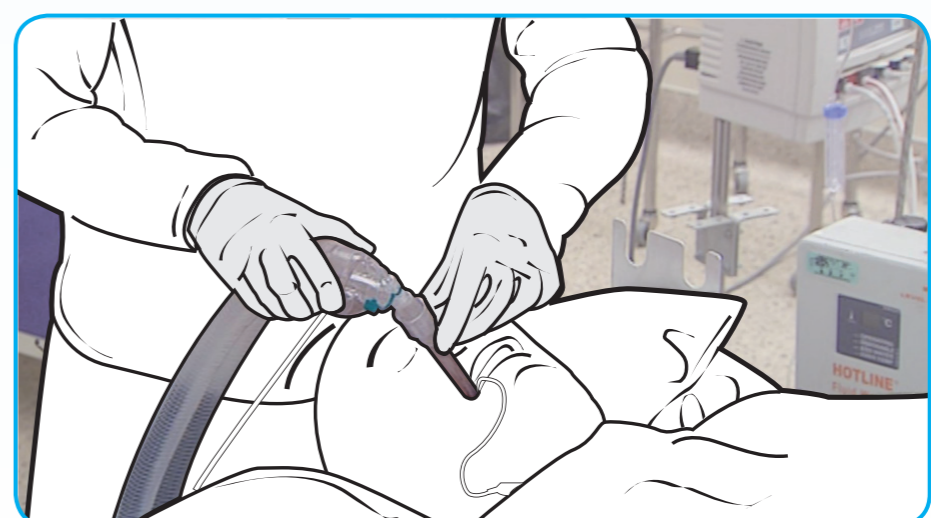
Briefly disconnect SAD (along with swivel connector) from anaesthetic circuit, deflate cuff (if present) and start withdrawing SAD (along with swivel connector), applying counter pressure on AIC to prevent movement. Once the SAD cuff becomes visible, grasp AIC in the mouth and fully remove SAD with the swivel connector. The process should be done with care. Again note the depth of AIC at the lips, ensuring that it **never exceeds 26cm.**

6



Using a laryngoscope, railroad the tracheal tube (ETT) over AIC ensuring a 'tip anterior' orientation. Use a conventional ETT - minimum size is 7.0 and pre cut to appropriate length.

7



Reconnect circuit and re-establish anaesthesia and ventilation. Confirm end-tidal CO₂. Consider FS confirmation of ETT position.

- ❖ This is not an airway rescue technique
- ❖ It should be performed in a controlled stepwise process
- ❖ The process is designed to provide continued ventilation/oxygenation via the SAD and swivel connector until the SAD is removed and tracheal tube is railroaded in place
- ❖ Oxygen can be delivered via the AIC in situations where railroading of tracheal tube is prolonged; assisting ventilation via this route is often suboptimal (narrow diameter/lack of cuff) - Refer to manufacturer's guidelines for methods of oxygen delivery.

Recommendations

1. Consider a second anaesthetist in addition to a trained assistant.
2. Use a camera system for fibroscope.

Caution

The aintree catheter is not recommended with the LMA Supreme.